

# QANZ

## Radar Activated Surveillance



**RADAR**  **VISION**  
RADAR ACTIVATED SURVEILLANCE

**Scans your  
entire site,  
every second of  
every day**



**RADAR ACTIVATED SURVEILLANCE**



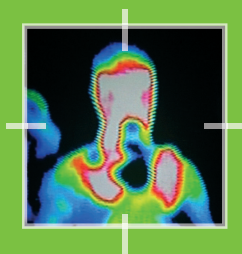
## Spots intruders

Our advanced radar technology will identify all possible threats and alert you immediately.



## Tracks intruders

Radar Vision will lock cameras on the threat, and begin recording, following every movement.



## Outsmarts intruders

Combine radar tracking with thermal imaging and even the most devious trespassers will be seen, day or night, whatever the weather.

# A unique combination

**Partner any combination of radar units with any of the C-AllView camera range and you have Radar Vision. It's a devastatingly effective partnership and the only one of its type made in the UK**

## How does Radar Vision work?

Our radars are compact, high performance units, barely larger than a football, designed for 24-hour, all-weather use. They scan a full 360° from close range up to 800m radius every second. Any trespassers are detected in the blink of an eye and cameras are automatically directed to track them, relaying footage to the control room.

## What can Radar Vision do for me?

Radar is very difficult to evade! And it's silent and discreet in operation, making it ideal for sites where residents, customers or workers don't want to feel 'spied upon'.

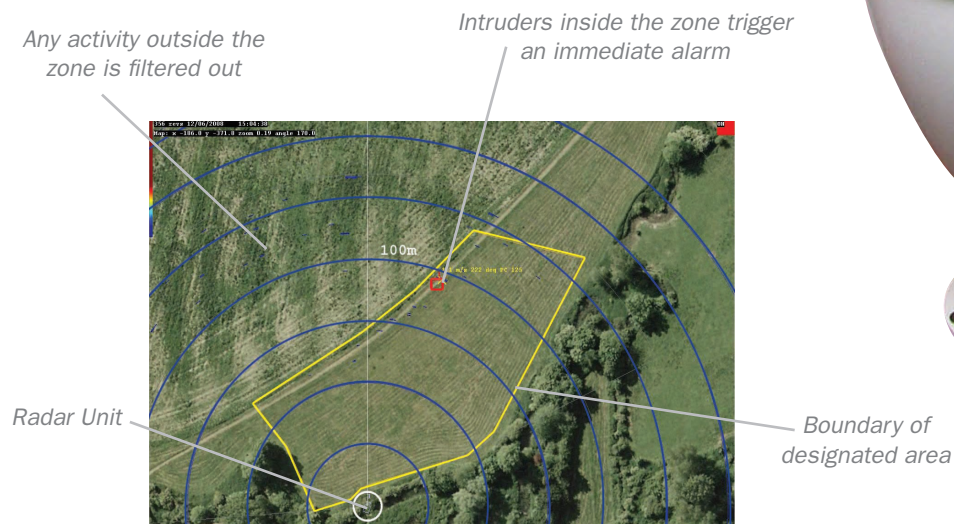
## How easy is Radar Vision to install?

Very. And it's also simple to maintain and operate. It can be used to upgrade an established CCTV network or to form the heart of a completely new system. Radar units can be wireless and solar- (or wind-) powered so they can be positioned almost anywhere with no need to dig up the site. Once installed they can easily be re-configured to meet changing requirements.

## Will it integrate into my existing system?

Yes. Retrofitting is easy. And by adding Radar Vision to your system you will target your existing cameras for a more detailed view.

(Existing cameras need to have absolute positioning.)





## Couple our radar units with the C-AllView Dual Optical/Thermal Camera and you have a system that can track intruders no matter what the weather or lighting conditions

### What is thermal imaging?

Human vision is confined to a small portion of the electromagnetic spectrum called visible light. But thermal cameras detect objects in the infrared range of the spectrum, distinguishing between warmer objects and colder ones.

### How does it work?

People, animals and vehicles give off characteristic heat signatures that enable thermal cameras to spot them, translating the thermal signals into high-definition on-screen images. Thermal imaging works even when intruders are camouflaged or hidden in overgrowth. Because thermal cameras see radiation generated by the subject, no artificial lighting is ever required. They can – literally – see in the dark.

### What is Ganz Thermal?

Ganz offers two top-quality thermal cameras – each delivering the latest in thermal technology. The C-AllView Dual combines a thermal and optical camera in one all-weather PTZ unit for maximum flexibility. For less demanding, more sheltered locations, the fixed versions represent exceptional value for money.

### What can Ganz Thermal do for me?

The new generation of thermal systems will detect and monitor intruders at huge distances. That gives you vital reaction time. Unlike conventional systems, they can also see through rain, fog, mist, snow, smoke and foliage.

### Will I need a licence to use Ganz Thermal?

No. Ganz thermal cameras operate at 9Hz (frames per second) which makes them perfect for surveillance without posing any national security risk.

(25Hz versions of C-AllView are available on request. These will be subject to international licence agreements.)

#### Thermal cameras see in darkness



CONVENTIONAL CCTV



THERMAL

#### Foliage offers no hiding place



IMAGE INTENSIFIER



THERMAL

#### No lens flare from vehicle headlights



CONVENTIONAL CCTV



THERMAL

#### See through fog, mist, rain and snow



CONVENTIONAL CCTV



THERMAL

#### See through smoke



CONVENTIONAL CCTV



THERMAL

# How Radar Vision works

**Four radar units run up to five cameras each, giving complete coverage across the designated area – inside and outside the perimeter fence**

## **Monitor pre-alarm zones outside the perimeter**

A customised pre-alarm zone outside the perimeter provides early warnings

## **Activity outside your pre-alarm zone will not set off any false alarms**

These walkers will only trigger an alarm if they step into the pre-alarm zone

## **Set the exact area you want to view**

Customise the exact area you want to cover, inside or outside your perimeter

## **See through fences**

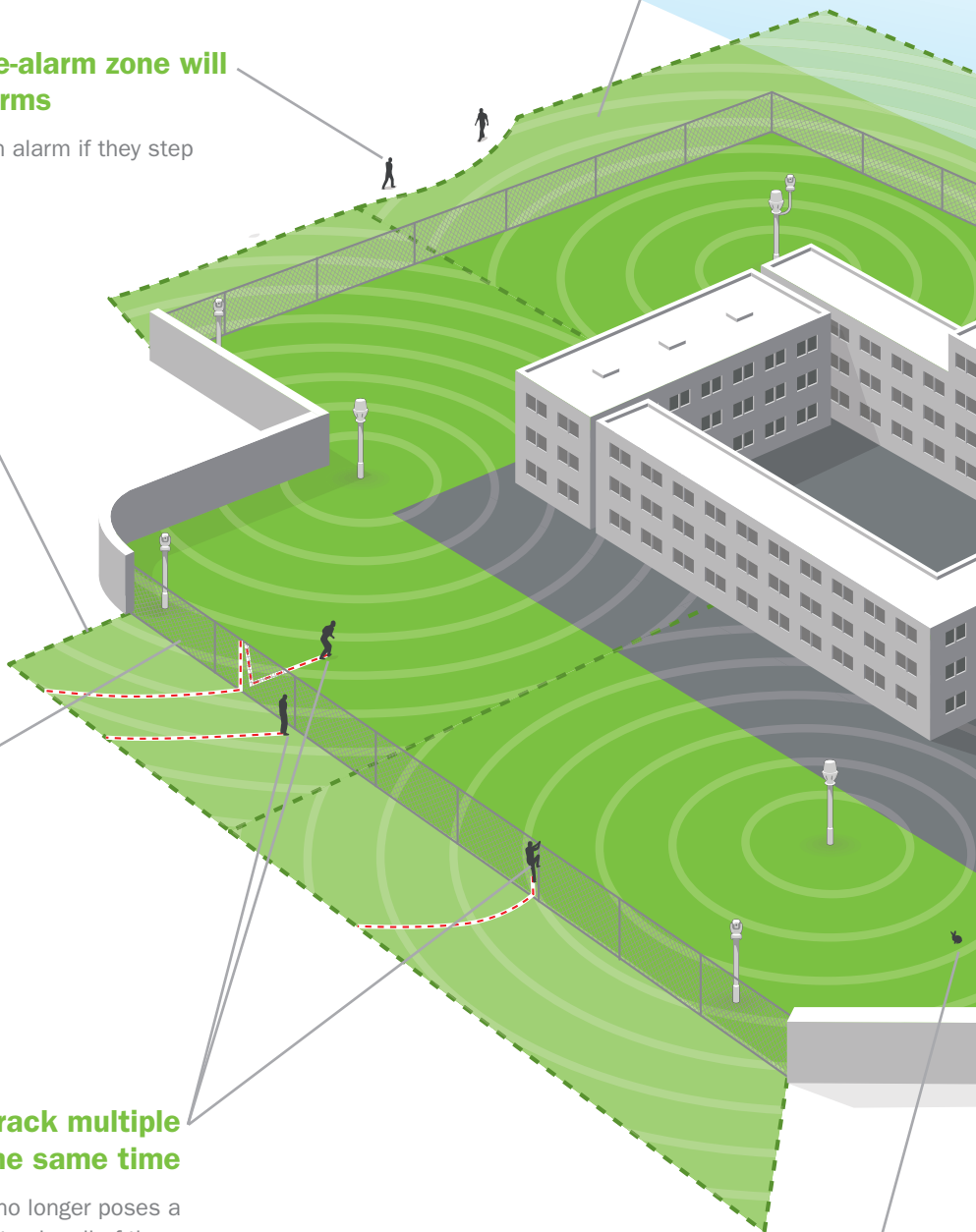
Fences bushes and trees don't interfere with the radar signal

## **Detect and track multiple intruders at the same time**

More than one intruder no longer poses a problem as Radar Vision tracks all of them displaying alternate images of each

## **False threats (eg rabbits) are ignored**

Radar Vision can be calibrated to your exact requirements, ensuring that only genuine threats trigger an alarm





# GANZ

## Radar sees across water, so craft that get too close for comfort can be monitored

With your extended pre-alarm zone, even if the threat is on water, you will be alerted

## Legitimate traffic further off the coast does not trigger any alarms

Legitimate traffic passes outside the pre-alarm zone without triggering an alert

## Radar Unit

## Vehicles are spotted before they even enter the security gates

The pre-alarm zone you set for the site will detect vehicles before they breach the perimeter



See through rain, mist, fog and snow



Detect and track after dark with thermal cameras



Software filters out false alarms triggered by small animals and birds



Event-triggered alarms are picked up in the control room

# Radar Vision is watching, even when you're not

**With Radar's constant vigilance, you will be alerted the moment a potential intruder is detected**



The instant Radar Vision detects an intruder entering a designated zone, security staff in the control room are alerted by an audio or visual alarm. The cameras will automatically track the intruder's movements in real time and the system's event recorder will be triggered to record the footage.

## **Reduce costs**

This system means that operators no longer need to patrol grounds and scan monitors continually, on the off-chance they'll spot something. Radar Vision eliminates the risk of an intruder being missed by human error and gives you 100% coverage of your property. In reducing labour-intensive security patrols, you'll also significantly reduce your payroll costs.

## **Multiple targets**

Where multiple targets are being tracked, Radar Vision will automatically switch the CCTV camera between each one, filming and recording for a specified time before switching back again.

## **No false alarms**

Because you set the exact area you want Radar Vision to patrol, any activity outside this designated zone, even if it's within the range of the original radar signal, will not generate an alarm. You also set the thresholds for vehicles and animals so the system is tailored to your site's specific needs and only swings in to action when there is a genuine security threat.

## **Event-driven recording**

Radar Vision will automatically activate an event recorder if your designated zone is breached. And because it only records significant activity, if your staff are looking for a particular piece of evidence after the event, they won't have to wade through hours of meaningless footage to find it.





**Match any combination of our radars with any of our cameras to meet the exact requirements of your site**



**Using a customised combination of radar units, each running up to five C-AllViews – you'll ensure total coverage of your site**



#### **W500 Radar Unit**

- Detects intruders up to 500m radius
- Retrofits to existing systems
- Sees in all lighting conditions
- Event-triggered alerts and recording



### **Radar Units**

#### **W200 Radar Unit**

- Detects intruders up to 200m radius
- Retrofits to existing systems
- Sees in all lighting conditions
- Event-triggered alerts and recording



#### **W800H Radar Unit**

- Detects intruders up to 800m radius
- Retrofits to existing systems
- Sees in all lighting conditions
- Event-triggered alerts and recording



**See day and night with the market-leading range of Ganz cameras – designed for reliability and endurance**



#### **C-AllView Dual**

- Powerful 36x optical camera
- 12°, 25° & 50° thermal lens options
- Effective 24 hours a day
- Man detection up to 1,000m
- Automatic sunlight protection



#### **C-AllView optical camera**

- No blind spots when pole-mounted
- The camera can look upwards
- Flat window means no distortion
- 36x and 18x zoom options
- Built-in, self-cleaning wiper



#### **High-speed dome camera**

- Day/night operation
- Large 30x zoom ratio
- Integrates into most CCTV systems
- Internal and external applications
- 360° continuous rotation

# Case Studies

*The private residence of a high profile VIP had to be protected from a number of threats, including theft, kidnapping, terrorism and press intrusion. There are several buildings on the estate, set in open grounds. The physical security measures already in place, which included electrified fencing, did not provide the required level of protection.*

*Radar Vision was chosen because it would provide significantly greater security yet would not impinge on the privacy of the VIP and his family. The system was set up to be remotely monitored but viewed only in the event of an intruder being detected in selected zones that formed a secondary protective layer within the perimeter. Four Radar Vision units, controlling 12 C-AllView cameras, ensured complete, automated coverage of the secure zones. This solution ensured the least possible impact on the VIP's privacy, using real-time intruder tracking and the latest viewing facility available.*

## Private Estate of VIP

**“My boss wanted protection for his family without intrusion on their privacy – this system delivers exactly that.”**

**PA to VIP**



*Power stations face the prospect of terrorist attack and action from militant protesters. Theft of machinery, metal and commodities was another consideration.*

*The site is cluttered both with active machinery and a changing landscape of coal heaps. Once inside the perimeter, any intruder would be difficult to identify and catch. It was therefore necessary to detect and track any potential intruders on the open ground surrounding the site, before they reached the perimeter. Planners wanted to avoid the expense of manned patrols and were concerned about the potential error with continuous CCTV monitoring in the control room.*

*The solution was provided by four W500 Radar Vision units, controlling five dual optical/thermal C-AllView cameras. Located at the perimeter, these units scan out over the fields beyond the power station to a range of 500 metres. Alarms, Radar Vision displays and video of potential intruders are automatically relayed to the gatehouse control room, in real time, to allow security staff to respond immediately.*

## Power Station

**“For us rapid response is essential, and that means we need advance warning if intruders approach.”**

**Site Security Supervisor**





**Intruders will be  
on your screens  
before they're  
on your property**



**RADAR ACTIVATED SURVEILLANCE**



# Radar Activated Surveillance



Call one of our team and arrange to come  
and see Radar Vision in action for yourself



7/8 Garrick Industrial Centre

Irving Way London NW9 6AQ UK

sales: +44 (0)20 8732 3334/3325/3310

fax: +44 (0)20 8202 3387

email: [info@cbcuk.com](mailto:info@cbcuk.com)

[www.cbceurope.com](http://www.cbceurope.com)



RADAR ACTIVATED SURVEILLANCE