





Here at Goliath Footwear we would like to welcome you to our exciting range of safety and occupational footwear products. Make sure you see the popular GroundMasters, and FurnaceMasters ranges plus the lightweight Sprinters ranges as an example of some of our best selling lines. We've been busy developing more new products and hope to bring you news of these later in 2009. Goliath Footwear is now bigger, better and stronger than ever before, and we know we are positioned well to significantly grow our business within the next 2 years.



CONTENTS

GROUNDMASTERS.....	1-4
FURNACEMASTERS.....	5-6
GORE-TEX.....	7-9
UNIQLITES.....	10-12
RUGGED RAIDERS.....	13-16
SPRINTERS.....	17-20
RIGGERS.....	21-23
COMFORTLITES.....	24-26
AIR ACTIVE.....	26
SPECIAL HAZARDS.....	27-38
- FIREFIGHTER'S.....	28-29
- CONDUCTIVE.....	30
- ESD.....	31
- ATOMIUM.....	32-33
- GOLIATH TACTICAL EQUIPMENT.....	34-38
CORPORATE CLASSICS.....	39-41
WOMEN'S CORPORATE.....	42-43
WOMEN'S SPRINTERS.....	44
WOMEN'S RUGGED RAIDERS.....	45
WOMEN'S GTE.....	46-47
WOMEN'S RIGGERS.....	48
SAFETY FOOTWEAR IN LARGER SIZES.....	49
ACCESSORIES.....	50
PRODUCT MARKING.....	51
FOOTWEAR DESIGN.....	53
THE QUALITY BRAND.....	54-55
TECHNOLOGY SHOWCASE.....	56-57
TECHNICAL GLOSSARY.....	58-59
FACTORY / PRODUCTION.....	60

GROUNDMASTERS®

The leading choice for construction and utilities firms.



New improved sole now 140grams lighter!!

Unlike many other manufacturers Goliath Footwear constructs a dual density rubber sole (DDR) which is injected onto the uppers. This type of sole is special because it offers excellent durability but with the comfort of the wearer at the forefront. DDR soles have a tough rubber nitrile outer skin that withstands nicks, cuts and heat to 300°C. A secondary lower density sponge-like mid layer is added to the outer layer to give comfortable, shock absorbing and lightweight properties. The whole DDR combination is injected onto the uppers for the best bond.

New Groundmaster range features:

- Black waxy thick buffalo leather.
- Dual Density Rubber sole for improved durability and comfort.
- Steel toe cap to 200 joules
- New and improved sport pattern, self cleaning sole for excellent grip.
- Two colour laces and matching stitching.
- New moisture wicking textile lining.
- Comfortable dual density full length footbed.
- Soft leather collar.
- Nail proof steel midsole.
- Oil and acid resistant outsole.
- Antistatic.
- Heat resistant to 300 degrees.
- SRC rated slip resistant sole unit
- Non marking outsole



All GroundMasters sole units have an SRC rating which means it has passed advanced European slip resistance tests to standard EN ISO 13287:2007. The sole unit is tested for slip resistance on ceramic tile wetted with dilute soap solution and on smooth steel with glycerol.

SAFETY SYMBOLS

Heat resistant sole to 120°C	Toe cap protection to 100 Joules	Penetration resistant midsole
Heat resistant sole to 160°C	Toe cap protection to 200 Joules	Slip resistant
Heat resistant sole to 200°C	Antistatic	Oil resistant
Heat resistant sole to 300°C		



- DDR SPORT SOLE
- STEEL MIDSOLE
- YKK SIDE ZIP
- EXTERNAL RIGGED CAP FOR LONG LIFE



SDR15 CSIZ



Professional safety combat boot with steel midsole, ridged scuff cap and YKK Side Zipper

Sizes: 5-13 • Weight: 930 gr

EN ISO 20345 S1P SRC



- DDR SPORT SOLE
- STEEL MIDSOLE
- GENEROUS FIT

SDR16 SI

Groundmaster Safety Shoe
Sizes: 5-13 • **Weight:** 730 gr
EN ISO 20345 **S1P SRC**



- DDR SPORT SOLE
- STEEL MIDSOLE
- GENEROUS FIT

SDR12 SI

Groundmaster Safety chukka boot
Sizes: 5-13 • **Weight:** 840 gr
EN ISO 20345 **S1P SRC**



- DDR SPORT SOLE
- STEEL MIDSOLE
- GENEROUS FIT

SDR10 SI

Groundmaster Safety ankle boot
Sizes: 5-13 • **Weight:** 880 gr
EN ISO 20345 **S1P SRC**



- DDR SPORT SOLE
- STEEL MIDSOLE
- RIGGED BUMP CAP
- GENEROUS FIT

SDR10 CSI

Groundmaster Safety ankle boot
Sizes: 5-13 • **Weight:** 900 gr
EN ISO 20345 **S1P SRC**



- DDR SPORT SOLE
- STEEL MIDSOLE
- GENEROUS FIT

SDR15 SI

Groundmaster Safety combat boot
Sizes: 5-13 • **Weight:** 865 gr
EN ISO 20345 **S1P SRC**



- DDR SPORT SOLE
- STEEL MIDSOLE
- RIGGED BUMP CAP
- GENEROUS FIT

SDR15 CSI

Groundmaster Safety combat boot
Sizes: 5-13 • **Weight:** 875 gr
EN ISO 20345 **S1P SRC**





DDR SPORT SOLE

STEEL MIDSOLE

GENEROUS
FIT

SDR17 SI



Groundmaster Safety ankle boot

Sizes: 5-13 • **Weight:** 840 gr

EN ISO 20345 **S1P** **SRC**



DDR SPORT SOLE

STEEL MIDSOLE

RIGGED BUMP CAP

GENEROUS
FIT

SDR17 CSI



Groundmaster Safety ankle boot

Sizes: 5-13 • **Weight:** 850 gr

EN ISO 20345 **S1P** **SRC**



FURNACEMASTERS

The Most Advanced Foundry Footwear Available in the UK



New improved Sole Now 140grams lighter!!

Unlike many other manufacturers Goliath Footwear constructs a dual density rubber sole (DDR) which is injected onto the uppers. This type of sole is special because it offers excellent durability but with the comfort of the wearer at the forefront. DDR soles have a tough rubber nitrile outer skin that withstands nicks, cuts and heat to 300°C. A secondary lower density sponge-like mid layer is added to the outer layer to give comfortable, shock absorbing and lightweight properties. The whole DDR combination is injected onto the uppers for the best bond.

Furnace Masters Features:

- Chrome tanned, heavy duty leather
- Moisture wicking lining to vamp, all other areas unlined for maximum comfort in hot conditions.
- Dual Density rubber soling system for excellent durability, good comfort and provides shock absorption for the wearer.
- Quick release fasteners for rapid removal in case of molten metal splash.
- Heat resistant sole to 300°C
- Steel toe cap resistant to 200 Joules
- Deep cleated sole with ladder grip for sure footing
- Antistatic
- Shock absorbing heel
- EN ISO 20345 S1 BS4676



GENEROUS FIT

HM2005 W



Calf length 200mm (Type D) Foundry Boot with dual density rubber sole

Sizes: 5-13 • **Weight:** 730 gr

EN ISO 20345 **S1** BS4676



HM2004 W



High leg (Type C 325mm) Foundry boot
Sizes: 5-13 • **Weight:** 920 gr

EN ISO 20345 **S1** BS4676



HM2001 W



Ankle Foundry Boot
Sizes: 5-13 • **Weight:** 760 gr

EN ISO 20345 **S1** BS4676

GORE-TEX

For warm dry feet in extreme weather conditions.



GORE-TEX® TECHNOLOGY

All Goliath footwear labelled with the GORE-TEX® footwear logo are premier products made with a windproof and breathable GORE-TEX® membrane. The premium GORE-TEX® styles incorporating the GORE-TEX® lining material are manufactured under license to ensure the highest standards are met.

The process is independently audited to ensure conformance to the specification for all GORE-TEX® premium products is consistent.



- RAPID LACE/ZIP COMBO
- STEEL TOE AND MIDSOLE
- PREMIUM GORE-TEX LINING
- EXTERNAL BUMP CAP

GTX421



High leg tactical safety boot
Sizes: 3-13 • **Weight:** 820 gr

EN ISO 20345 **S3**



PREMIUM GORE-TEX
LINING

STEEL TOE AND MIDSOLE

GTX423



Tactical ankle boot

Sizes: 3-13 • **Weight:** 780 gr

EN ISO 20345 **S3**



PREMIUM GORE-TEX
LINING

STEEL TOE AND MIDSOLE

GTX424



Tactical ankle boot

Sizes: 3-13 • **Weight:** 780 gr

EN ISO 20345 **S3**



PREMIUM GORE-TEX
LINING

STEEL TOE AND MIDSOLE

GTX602



Waterproof Gore-tex® tactical shoe

Sizes: 3-13 • **Weight:** 780 gr

EN ISO 20345 **S3**



PREMIUM GORE-TEX LINING

SOFT TOE – NO METAL TOE CAP

GTE01L GTX



All leather combat boot

Sizes: 3-13 • **Weight:** 620 gr

EN ISO 20347 **O2**



SPEED LACING SYSTEM

PREMIUM GORE-TEX LINING

SOFT TOE – NO METAL TOE CAP

GTE02L GTX



All leather ankle boot

Sizes: 3-13 • **Weight:** 580 gr

EN ISO 20347 **O2**

UNIQLITES

Lightweight non-metal airport friendly footwear



This UNIQLITES collection features:

- Full grain leather
- Moisture wicking non-woven textile lining
- Combination polyurethane (PU) midsole with thermo-polyurethane (TPU) outsole for the ultimate in light weight and durability.
- Padded comfort collar for secure fit
- Full length dual density removeable PU footbed
- Key seams double stitched for strength
- Strobel construction for athletic shoe comfort
- Polycarbonate non-metal toe cap – the best performing material for the application without using metal.
- Toe cap resistant to 200 joules
- True non-metal construction throughout.
- Plastic shank provides stability and helps prevent twisting



L-protection[®]
LENZI

WITH L-PROTECTION[®]
NAIL PROOF MIDSOLE

UL100 P



Non-metal lightweight safety training shoe

Sizes: 3-13 • Weight: 640 gr

EN ISO 20345 **S1P**



POLYCARBONATE NON-METAL TOE CAP

Goliath footwear's non metallic range features a toe cap made from Polycarbonate. This material is ultra tough and extremely lightweight and often used in the production of bullet resistant windows and doors as well as being used for helmets and other PPE equipment. These toe caps have been developed and produced in our own factory to ensure ultimate quality and performance.



L-PROTECTION[®]

L-Protection[®] for increased comfort and safety as a new generation nail-proof textile insole.

- Safer than steel.
- Resists penetration even by small-diameter nails
- Greater protected surface area of the foot
- Zero traceability by metal detector
- Maximum flexibility and comfort
- Greater ground adherence
- Minimum weight.
- Thermo and electro isolation



UL110



Non-metal lightweight safety hiker

Sizes: 3-13 • Weight: 640 gr

EN ISO 20345 **S1**

UL100



Non-metal lightweight safety training shoe

Sizes: 3-13 • Weight: 620 gr

EN ISO 20345 **S1**



L-protection[®]
LENZI

WITH L-PROTECTION[®]
NAIL PROOF MIDSOLE

UL110 P



Non-metal lightweight safety hiker

Sizes: 3-13 • Weight: 660 gr

EN ISO 20345 **S1P**



WITH L-PROTECTION®
NAIL PROOF MIDSOLE

WARM LINED

UL424 P



Non-metal rigger

Sizes: 3-12 • Weight: 740 gr

EN ISO 20345 S1P



WITH L-PROTECTION®
NAIL PROOF MIDSOLE

UL34 P



Non-metal executive shoe

Sizes: 6-13 • Weight: 620 gr

EN ISO 20345 S3

RUGGED RAIDERS

Rugged raiders offer a comfortable and enduring solution in tough working environments



All Rugged Raider styles feature:

- Steel toe to 200 joules
- Moisture wicking textile lining
- Dual density polyurethane sole
- Full length footbed
- Antistatic
- Oil resistant sole
- Heat resistant sole to 160°C
- Slip resistant



CONVENIENT ZIP / LACE
COMBO FOR EASY
DONNING AND DOFFING

STEEL MIDSOLE

TWO COLOUR NON
MARKING SOLE

MATCHING 2 COLOUR
SPORTS TECH LACES

EL180 SIZ



Black tough leather Combat Zip boot

Sizes: 3-13 • Weight: 700 gr

EN ISO 20345 S1P



TWO COLOUR NON MARKING SOLE

MATCHING 2 COLOUR SPORTS TECH LACES

GENEROUS FIT

EL160



Black grain leather industrial shoe

Sizes: 3-13 • Weight: 560 gr

EN ISO 20345 S1



STEEL MIDSOLE

TWO COLOUR NON MARKING SOLE

MATCHING 2 COLOUR SPORTS TECH LACES

GENEROUS FIT

EL160 SI



Black grain leather industrial shoe

Sizes: 3-13 • Weight: 590 gr

EN ISO 20345 S1P



TWO COLOUR NON MARKING SOLE

MATCHING 2 COLOUR SPORTS TECH LACES

GENEROUS FIT

EL170



Black grain leather industrial ankle boot

Sizes: 3-13 • Weight: 620 gr

EN ISO 20345 S1



STEEL MIDSOLE

TWO COLOUR NON MARKING SOLE

MATCHING 2 COLOUR SPORTS TECH LACES

GENEROUS FIT

EL170 SI



Black grain leather boot

Sizes: 3-13 • Weight: 680 gr

EN ISO 20345 S1P



STEEL MIDSOLE

PULL ON LOOP

GPP07 SI



Black full grain leather dealer boot

Sizes: 3-13 • Weight: 680 gr

EN ISO 20345 S1P



BREATHABLE AIRTEX PANELS

ATHLETIC FIT

PADDED COLLAR AND BELLWS TONGUE

GPP08



Wide fit black leather and Airtex training shoe

Sizes: 3-13 • Weight: 620 gr

EN ISO 20345 S1



ATHLETIC FIT

SUITABLE FOR LADDER WORK

PADDED COLLAR AND BELLWS TONGUE

HDST3W



Wide fit leather training shoe with black French border

Sizes: 3-13 • Weight: 700 gr

EN ISO 20345 S1



STEEL MIDSOLE

HD431



Black full grain leather ankle boot
Sizes: 5-13 • Weight: 820 gr

EN ISO 20345 **S3**



STEEL MIDSOLE

HD432



Brown full grain leather ankle boot
Sizes: 5-13 • Weight: 820 gr

EN ISO 20345 **S3**



STEEL MIDSOLE

HD91



Sand nubuck full grain leather ankle boot
Sizes: 5-13 • Weight: 820 gr

EN ISO 20345 **S3**

SPRINTERS

A range of athletic styles with superb lightweight dual density PU soles



The new Sprinter EL250 and EL255 footwear styles feature:

- Steel toe cap to 200 joules
- Cordura® textile panels with high ventilation weave.
- Fast moisture wicking textile lining
- Combination PU sports contour sole. Two colour non marking outsole.
- High ventilation system keeping feet cool in warm work environments.
- ¾ length dual density PU footbed for instant comfort.
- Keys seams double stitched.
- 2 colour sports flat round lace, 'easy knot'.
- Goliath branding on tongue and tag
- True athletic fit with sports shoe comfort.
- Oil resistant sole
- Heat resistant sole to 160 degrees
- Slip resistant sole



STEEL MIDSOLE

HIGH VENTILATION SYSTEM

IDEAL FOR WAREHOUSES AND OTHER DRY INDOOR WORK AREAS

EL250S-SI-GR



Grey suede / grey textile ultra lightweight safety trainer

Sizes: 3-13 • Weight: 560 gr

EN ISO 20345 **S1P**





- HIGH VENTILATION SYSTEM
- IDEAL FOR WAREHOUSES AND OTHER DRY INDOOR WORK AREAS

EL250L-BL



Black leather / black textile ultra lightweight safety trainer

Sizes: 6-12 • **Weight:** 520 gr

EN ISO 20345 **S1**



- HIGH VENTILATION SYSTEM
- IDEAL FOR WAREHOUSES AND OTHER DRY INDOOR WORK AREAS

EL250L-GR



Black leather / grey textile ultra lightweight safety trainer

Sizes: 6-12 • **Weight:** 520 gr

EN ISO 20345 **S1**

Check prices and availability before ordering



- ATHLETIC FIT
- CLASSIC D RING AND HOOK LACING SYSTEM
- PADDED COLLAR AND BELLOWS TONGUE
- PULL ON HEEL LOOP

GPP03



Blue / grey nubuck training shoe

Sizes: 6-12 • **Weight:** 560 gr

EN ISO 20345 **S1**

Check prices and availability before ordering



- ATHLETIC FIT
- VELCRO FASTENING
- PADDED COLLAR AND BELLOWS TONGUE
- PULL ON HEEL LOOP

GPP05



Grey nubuck cycling shoe

Sizes: 6-12 • **Weight:** 500 gr

EN ISO 20345 **S1**

Check prices and availability before ordering



- HIGH VENTILATION SYSTEM
- IDEAL FOR WAREHOUSES AND OTHER DRY INDOOR WORK AREAS

EL255L-BL



Black full grain leather / black textile hiker

Sizes: 6-12 • **Weight:** 540 gr

EN ISO 20345 **S1**



- HIGH VENTILATION SYSTEM
- IDEAL FOR WAREHOUSES AND OTHER DRY INDOOR WORK AREAS

EL255L-GR



Grey suede / textile with high ventilation weave

Sizes: 6-12 • **Weight:** 540 gr

EN ISO 20345 **S1**

Check prices and availability before ordering



- ATHLETIC FIT
- CLASSIC D RING AND HOOK LACING SYSTEM
- PADDED COLLAR AND BELLOWS TONGUE
- PULL ON HEEL LOOP

GPP01



Blue / grey nubuck hiker

Sizes: 6-12 • **Weight:** 600 gr

EN ISO 20345 **S1**

Check prices and availability before ordering

RIGGERS

A range of riggers for the most versatile work environments



- BUMP CAP
- STEEL MIDSOLE
- HIGH VENTILATION SYSTEM
- IDEAL FOR WAREHOUSES AND OTHER DRY INDOOR WORK AREAS

EL255S-CSI-GR



Grey Suede / Grey textile hiker with bump cap

Sizes: 3-13 • Weight: 640 gr

EN ISO 20345 S1P



- STEEL MIDSOLE
- HIGH VENTILATION SYSTEM
- IDEAL FOR WAREHOUSES AND OTHER DRY INDOOR WORK AREAS

EL255S-SI-GR



Grey suede / Grey textile hiker

Sizes: 3-13 • Weight: 620 gr

EN ISO 20345 S1P



Rubber sole riggers feature:

- Full grain leather
- Dual Density Rubber soling system for excellent durability and comfort
- Steel toe cap to 200 joules
- Steel midsole
- Steel midsole
- GORE-TEX® or warm fur lined
- Side tabs for easy donning
- Full length dual density PU footbed
- Oil resistant sole
- Slip resistant sole
- Heat resistant to 300°C
- SRC rated



GTX423



GORE-TEX® lined rigger on DDR sole

Sizes: 5-13 • Weight: 980 gr

EN ISO 20345 S3 SRC





DUAL DENSITY
RUBBER SOLE

STEEL MIDSOLE

RIDGED BUMP CAP



HDR304 CSI



Tan warm fur lined rigger with dual density rubber sole

Sizes: 5-13 • **Weight:** 860 gr

EN ISO 20345 **S1P** **SRC**



DUAL DENSITY
RUBBER SOLE

STEEL MIDSOLE



HDR304 SI



Tan warm fur lined rigger with dual density rubber sole

Sizes: 5-13 • **Weight:** 840 gr

EN ISO 20345 **S1P** **SRC**



DUAL DENSITY
RUBBER SOLE

STEEL MIDSOLE

RIDGED BUMP CAP



HDR301 CSI



Brown warm fur lined rigger with dual density rubber sole

Sizes: 5-13 • **Weight:** 860 gr

EN ISO 20345 **S1P** **SRC**



DUAL DENSITY
RUBBER SOLE

STEEL MIDSOLE



HDR301 SI



Brown warm fur lined rigger with dual density rubber sole

Sizes: 5-13 • **Weight:** 840 gr

EN ISO 20345 **S1P** **SRC**

PU sole riggers feature:

- Full grain leather
- Dual Density PU
- Steel toe cap to 200 joules
- Steel midsole
- PU bump cap for long life in the most challenging conditions
- Side tabs for easy donning
- Full length dual density PU footbed
- Oil resistant sole
- Slip resistant sole
- Heat resistant to 160°C.



WARM LINED

STEEL MIDSOLE

HD424 SI

FUR LINED



Tan rigger with dual density PU sole

Sizes: 3-13 • **Weight:** 840 gr

EN ISO 20345 **S1P**



STEEL MIDSOLE

UNLINED FOR WARM
WORKING CONDITIONS

HD425 SI

UNLINED



Tan rigger with dual density PU sole

Sizes: 3-13 • **Weight:** 840 gr

EN ISO 20345 **S1P**

COMFORTLITES

Classic executive styles with athletic comfort

The COMFORTLITES range features:

- Satin Matt finish leather, wipe clean and compatible with most polish or wax shoe care products
- Super fast, moisture wicking lining for all day comfort.
- Dual Density Hydrolysis+ PU outsole and midsole.
- Classic styling for the professional look in the workplace
- Padded collar for snug fit and instant comfort
- Classic eyelets
- Tough and durable sports tech lace
- Detail stitching on all key seams
- Steel toe cap resistant to 200 joules.
- Heat resistant to 160°C
- 3/4 length snug footbed for instant comfort
- Antistatic



3/4 LENGTH SNUG FOOTBED

CL34



Lace up executive shoe

Sizes: 5-13 • **Weight:** 520 gr

EN ISO 20345 **S2**



3/4 LENGTH SNUG FOOTBED

CL69



Lace up executive brogue shoe

Sizes: 5-13 • **Weight:** 520 gr

EN ISO 20345 **S2**



LUXURIOUS LEATHER LINING

3/4 LENGTH SNUG FOOTBED

CL601



Lace up executive brogue shoe

Sizes: 5-13 incl half sizes

Weight: 575 gr

EN ISO 20345 **S2**



LUXURIOUS LEATHER LINING

3/4 LENGTH SNUG FOOTBED

CL603



Oxford toe cap shoe

Sizes: 5-13 incl half sizes

Weight: 575 gr

EN ISO 20345 **S2**



STEEL MIDSOLE

3/4 LENGTH SNUG
FOOTBED

CL45 SI



Apron front executive

Sizes: 5-13 • Weight: 595 gr

EN ISO 20345 **S3**3/4 LENGTH SNUG
FOOTBED

HD45



Apron front executive shoe

Sizes: 5-13 • Weight: 520 gr

EN345 **S2**3/4 LENGTH SNUG
FOOTBED

CL74



Slip on executive shoe

Sizes: 5-13 • Weight: 480 gr

EN ISO 20345 **S2**

AIR ACTIVE

With air cushioned sole



A POPULAR UNIFORM SHOE

CLASSIC GIBSON CUT

H82



Black uniform shoe

Sizes: 5-13 • Weight: 675 gr

EN ISO 20345 **SB**

SPECIAL HAZARDS

Safety Footwear solutions for specialist workplace conditions

This section includes all safety footwear to protect from hazardous working environments. At Goliath Footwear we incorporate specific technology or design features to suit these specific working environments.

FIREFIGHTER FOOTWEAR - pages 28 and 29.

A range of high specification leather firefighter boots for all fire and rescue situations with DDR and GORE-TEX technology.

CONDUCTIVE FOOTWEAR - page 30.

Styles suitable for handling static - sensitive devices such as munitions.

ELECTRO-STATIC DISSIPATION FOOTWEAR (ESD) - Page 31.

Styles suitable for handling sensitive electronic equipment.

ATOMIUM FOOTWEAR - Pages 32 and 33.

Styles with super slip resistant sole units and microfibre uppers suitable for food processing and clean room environments.

GOLIATH TACTICAL FOOTWEAR - Pages 34, 35, 36, 37 and 38.

Styles suitable for Police and Security in a diverse range of environments.



FIREFIGHTER'S

A revolutionary new firefighter range incorporating DDR for a unique positioning in the market



Lightweight, cushioning expanded rubber midsole.

Wear, slip, heat, oil and acid resistant compact rubber outsole.

New lightweight Dual Density Rubber formula specifically designed for Firefighter footwear.

Unlike many other manufacturers Goliath Footwear constructs a dual density rubber sole (DDR) which is injected onto the uppers. This type of sole is special because it offers excellent durability but with the comfort of the wearer at the forefront. DDR soles have a tough rubber nitrile outer skin that withstands nicks, cuts and heat to 300°C. A secondary lower density sponge-like mid layer is added to the outer layer to give comfortable, shock absorbing and lightweight properties. The whole DDR combination is injected onto the uppers for the best bond.



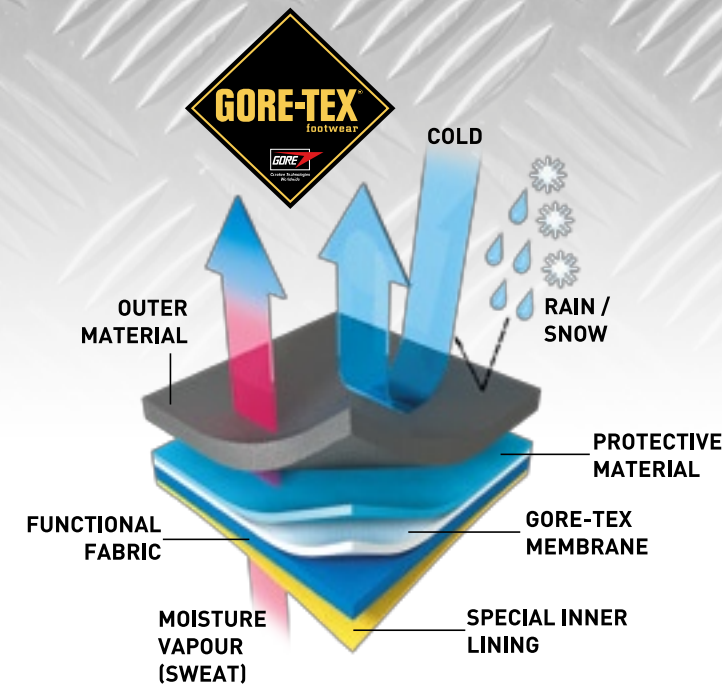
QUICK RELEASE SYSTEM

ALSO AVAILABLE WITH HIGH ELECTRICAL RESISTANCE OUTSOLE ON MADE TO ORDER BASIS.

FF210



Zip up/lace up firefighter boot
Safety markings: EN ISO 15090
Sizes: 3-13
Weight: 1220 gr



The FIREFIGHTER range features:

- Full Grain Leather
- GORE-TEX®
- Dual Density Rubber sole for light weight and good durability. Deep cleated for great grip with defined heel and ladder grips
- Steel toe to 200 joules
- Nomex fire retardant threads throughout
- Ankle protection on both sides of the foot.
- Reflective Hi Viz profile to both sides of the foot
- Steel midsole
- Shock and energy absorbing heel zone
- Padded Collar
- Comfort padded cushion footbed
- Antistatic



'EASY PULL' HANDLES

ELASTICATED ANKLE GRIP FOR SECURE FIT

ALSO AVAILABLE WITH HIGH ELECTRICAL RESISTANCE OUTSOLE ON MADE TO ORDER BASIS.

FB300GTX



Pull on firefighter boot
Safety markings: EN ISO 15090
Sizes: 3-13 • **Weight:** 1220 gr

New firefighter footwear product team.

Call now to arrange a free consultation.

Goliath Conductive Industrial Classics feature:

- Full grain leather
- Fast wicking textile lining
- Dual Density Rubber (DDR) Outsole and midsole for good durability
- Full length conductive footbed
- Heat Resistant sole to 300 degrees C
- Impact resistant to 200 joules
- Oil resistant
- SRC rated

CONDUCTIVE

What is conductive?

Conductive footwear protect the wearer from the hazards of static electricity build up. They are particularly suitable for handling static – sensitive devices but give no protection against electric shock.



CDR12



Conductive leather chukka boot

Sizes: 3-13 • **Weight:** 800 gr

EN ISO 20345  

STEEL TOE CAP

CDR16



Conductive leather shoe

Sizes: 3-13 • **Weight:** 725 gr

EN ISO 20345  

What is ESD footwear?

Through its sole construction, ESD footwear provides a safe, controlled method of discharging static electricity that accumulates in your body. The tolerances for the resistance of ESD footwear are stricter (100kΩ-35MΩ) than for ordinary antistatic footwear. Wearing ESD footwear can help you avoid damage to sensitive electronic equipment.



The ESD range features:

- Electro static discharge control
- Steel toe cap to 200 joules
- Dual Density Hydrolysis* PU sole
- Moisture wicking lining
- Oil resistant sole
- Slip resistant sole
- Heat resistant sole to 160°C

EL160 ESD



Black ESD safety trainer

Sizes: 3-13 • **Weight:** 560 gr

EN ISO 20345 S1



Grey suede ESD safety trainer

Sizes: 6-12 • **Weight:** 500 gr

EN ISO 20345 S1

ATOMIUM

Antibacterial and slip resistant footwear for clean room and food processing

Slip resistant and self-cleaning outsole which prevents cross contamination due to product being lodged in the sole tread of the footwear, specially designed for Clean Room and Food Industry.



The ATOMIUM range features:

- Microfibre
- Moisture wicking non-woven textile lining
- Dual density hydrolysis+ polyurethane anti-clog outsole for durability and excellent slip resistance.
- Padded collar for all day comfort ensuring a snug fit
- Full length footbed
- Impact Resistant up to 200 joules
- Heat resistant to 160°C
- Antistatic
- Oil resistant outsole

MICROFIBRE UPPER

ATOM60



White slip on ankle boot

Sizes: 3-13 • **Weight:** 680 gr

EN ISO 20345 **S2**



MICROFIBRE UPPER

ATOM61



White slip on shoe

Sizes: 3-13 • **Weight:** 560 gr

EN ISO 20345 **S2**



ATOM63



Black slip on ankle boot

Sizes: 3-13 • **Weight:** 680 gr

EN ISO 20345 **S2**

Check size availability before ordering

MICROFIBRE UPPER

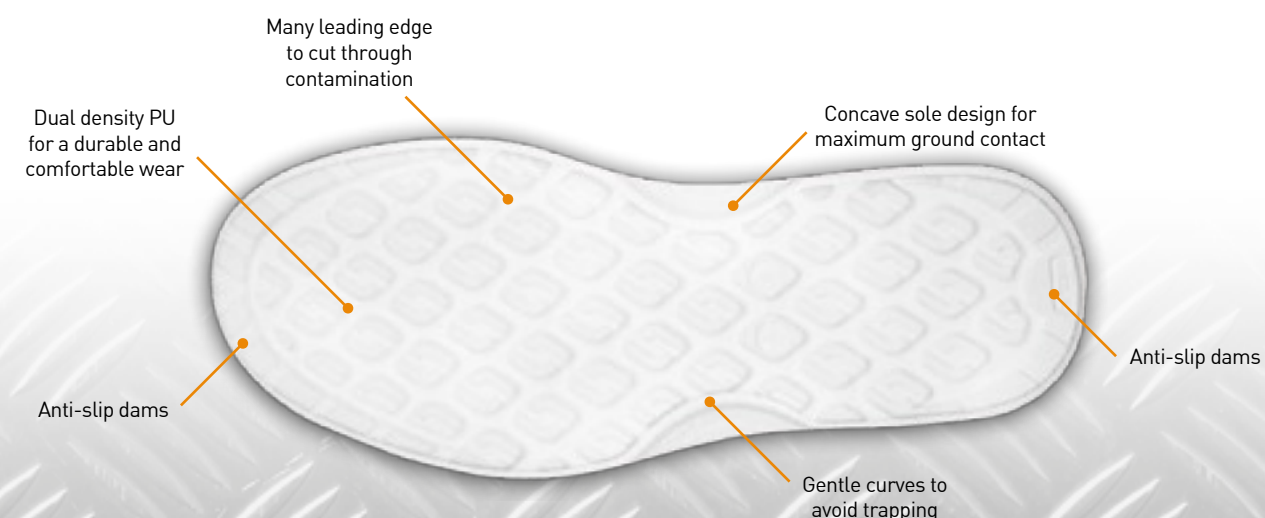
ATOM64



White lace up shoe

Sizes: 3-13 • **Weight:** 525 gr

EN ISO 20345 **S2**



GOLIATH TACTICAL EQUIPMENT

The Goliath tactical safety range features:

- Steel toe and protective steel midsole
- Full grain Leather
- Waterproof Gore-tex lining or moisture wicking textile lining (MG02 and SDR15SIFR)
- Full length footbed for instant comfort
- Heat resistant sole
- Heat, oil and slip resistant sole
- Antistatic



RAPID LACE/ZIP COMBO

STEEL TOE AND MIDSOLE

PREMIUM GORE-TEX LINING

EXTERNAL BUMP CAP

GTX421



High leg tactical safety boot

Sizes: 3-13 • Weight: 820 gr

EN ISO 20345 S3



PREMIUM GORE-TEX LINING

STEEL TOE AND MIDSOLE

GTX424



Tactical ankle boot

Sizes: 3-13 • Weight: 780 gr

EN ISO 20345 S3



PREMIUM GORE-TEX LINING

STEEL TOE AND MIDSOLE

GTX602



Waterproof Gore-tex® tactical shoe

Sizes: 3-13 • Weight: 780 gr

EN ISO 20345 S3



STEEL TOE AND MIDSOLE

DUAL DENSITY RUBBER SOLE

MG02



Premium leather uniform safety boot

Sizes: 3-13 • Weight: 840 gr

EN ISO 20345 S3



STEEL TOE AND MIDSOLE

FIRE RETARDANT LACE

FLAME RETARDANT THREAD

DUAL DENSITY RUBBER SOLE

SDR15SIFR



Fire retardant public order boot

Sizes: 5-13 • Weight: 860 gr

EN ISO 20345 S3 SRC



This Goliath tactical soft toe range features:

- Soft toe
- Full grain leather uppers
- Very lightweight construction.
- TPU Commando sole unit; proven design in MOD and security applications – used the world over by NATO forces
- Full length dual density PU footbed for instant comfort
- Fast wicking textile lining
- Slip resistant sole
- Oil resistant sole
- Antistatic



SOFT TOE – NO METAL TOE CAP

GTE02L



All leather ankle boot

Sizes: 3-12 • Weight: 600 gr

EN ISO 20347 **O2**



BREATHABLE CORDURA®

SOFT TOE – NO METAL TOE CAP

GTE01C



Leather combat boot with textile side panels

Sizes: 3-12 • Weight: 600 gr

EN ISO 20347 **O1**



SOFT TOE – NO METAL TOE CAP

GTE01L



All leather combat boot

Sizes: 3-12 • Weight: 620 gr

EN ISO 20347 **O2**



PREMIUM GORE-TEX LINING

SOFT TOE – NO METAL TOE CAP

GTE01L GTX



All leather combat boot

Sizes: 3-13 • Weight: 620 gr

EN ISO 20347 **O2**



SPEED LACING SYSTEM

PREMIUM GORE-TEX LINING

SOFT TOE – NO METAL TOE CAP



GTE02L GTX



All leather ankle boot

Sizes: 3-13 • Weight: 580 gr

EN ISO 20347 **O2**



GTE
WARM WEATHER
SOFT TOE

CORPORATE
CLASSICS

The Goliath warm weather patrolling range features:

- Moisture wicking non-woven textile lining
- Dual Density Polyurethane
- Soft toe
- Heat resistant sole to 160°C
- Rust proof metal work and fixings
- Wide fit
- Full length footbed
- Antistatic
- As used by NATO troops in the UK, Denmark and Turkey



SOFT TOE - NO METAL TOE CAP

30-310



Black warm weather patrol boot
Sizes: 3-13 • **Weight:** 575 gr
EN ISO 20347 **O1**

CORPORATE CLASSICS

For low risk work areas

The Goliath Diplomat Range features:

- Soft toe
- Full grain leather upper with polishable finish
- Abrasion resistant leather
- Dual density PU shock absorbing midsole with TPU performance outsole
- Formal shoe look
- Dual density PU footbed for all day comfort
- Smart lacing system with hidden eyelets
- Antistatic
- Oil resistant
- Slip resistant
- Heat resistant to 160°C



SMART DUTY SHOE

SOFT TOE - NO PROTECTIVE TOE CAP

DPLT01



Soft toe Diplomat shoe
Sizes: 6-12 • **Weight:** 460 gr
EN ISO 20347 **O1**



SOFT TOE - NO METAL TOE CAP



30-320



Sand suede warm weather patrol boot
Sizes: 3-13 • **Weight:** 575 gr
EN ISO 20347 **O1**

DPLT02



Soft toe Brogue Diplomat shoe
Sizes: 6-12 • **Weight:** 460 gr
EN ISO 20347 **O1**



The Occupational Air Active range features:

- Soft toe
- Full grain smooth leather
- Moisture wicking non-woven textile
- Air cushioned PVC sole
- Heel tab for easy donning
- Padded Collar
- Oil resistant sole
- Slip resistant sole
- Heat resistant sole to 120 degrees



SOFT TOE - NO PROTECTIVE TOE CAP

HEX20



Black calf length boot (no steel toe cap)

Sizes: 5-12 • **Weight:** 620 gr

EN ISO 20347 **OB**

Check size availability before ordering



W5



Women's uniform shoe (no steel toe cap)

Sizes: 3-8 • **Weight:** 400 gr

EN ISO 20347 **OB**



NS26



Women's executive shoe on PU sole (no steel toe cap)

Sizes: 3-8 • **Weight:** 300 gr

EN ISO 20347 **OB**



MG03NS



Black uniform ankle boot (no steel toe cap)

Sizes: 3-13 • **Weight:** 620 gr

EN ISO 20347 **OB**



SOFT TOE - NO PROTECTIVE TOE CAP

HEX21



Black Uniform shoe (no steel toe cap)

Sizes: 5-12 • **Weight:** 600 gr

EN ISO 20347 **OB**

WOMEN'S CORPORATE

Suitable for office uniform

Women's Corporate range features:

- Full grain leather
- Dual density PU
- Steel toe cap
- Antistatic
- Oil resistant
- Heat resistant to 160 degrees
- Antistatic
- Slip resistant



L22



Black full grain leather boat shoe
Sizes: 3-8 • **Weight:** 420 gr

EN ISO 20345 **S1**



L26



Black ladies lace up shoe
Sizes: 3-8 • **Weight:** 420 gr

EN ISO 20345 **S1**



L50



Black ladies slip on shoe
Sizes: 3-8 • **Weight:** 420 gr

EN ISO 20345 **S1**



L60



Black ladies ankle boot
Sizes: 3-8 • **Weight:** 420 gr

EN ISO 20345 **S1**



L42



Black ladies lace up shoe
Sizes: 3-8 • **Weight:** 420 gr

EN345 **PB**



L48



Black ladies lace up shoe
Sizes: 3-8 • **Weight:** 660 gr

EN345 **S2**

Check size availability before ordering



TWO COLOUR NON
MARKING SOLE

MATCHING 2 COLOUR
SPORTS TECH LACES

GENEROUS
FIT

EL160



Black grain leather industrial shoe
Sizes: 3-8 • **Weight:** 560 gr

EN ISO 20345 **S1**



STEEL MIDSOLE

TWO COLOUR NON
MARKING SOLE

MATCHING 2 COLOUR
SPORTS TECH LACES

GENEROUS
FIT

EL160 SI



Black grain leather industrial shoe
Sizes: 3-8 • **Weight:** 590 gr

EN ISO 20345 **S1P**

WOMEN'S SPRINTERS

Lightweight and breathable athletic footwear solutions

The new Sprinter EL250 and EL255 footwear styles feature:

- Steel toe cap to 200 joules
- Cordura® textile panels with high ventilation weave.
- Fast moisture wicking textile lining
- Combination PU sports contour sole.
- Two colour non marking outsole.
- High ventilation system keeping feet cool in warm work environments.
- ¾ length dual density PU footbed for instant comfort.
- Keys seams double stitched.
- 2 colour sports flat round lace, 'easy knot'.
- Goliath branding on tongue and tag
- True athletic fit with sports shoe comfort.
- Oil resistant sole
- Heat resistant sole
- Slip resistant sole

STEEL MIDSOLE

HIGH VENTILATION SYSTEM

IDEAL FOR WAREHOUSES AND OTHER DRY INDOOR WORK AREAS

EL250S-SI-GR



Grey suede / grey textile ultra lightweight safety trainer

Sizes: 3-8 • Weight: 560 gr

EN ISO 20345 S1P



STEEL MIDSOLE

HIGH VENTILATION SYSTEM

IDEAL FOR WAREHOUSES AND OTHER DRY INDOOR WORK AREAS

EL255S-SI-GR



Grey suede / grey textile hiker

Sizes: 3-8 • Weight: 620 gr

EN ISO 20345 S1P



WOMEN'S SPRINTERS

WOMEN'S RUGGED RAIDERS

Tough enduring lightweight footwear solutions for the most versatile working environments

The Women's Rugged Raiders range features:

- Steel toe to 200 joules
- Moisture wicking textile lining
- Dual density polyurethane sole
- Full length footbed
- Antistatic
- Oil resistant sole
- Heat resistant sole to 160°C
- Slip resistant

CONVENIENT ZIP / LACE COMBO FOR EASY DONNING AND DOFFING

TWO COLOUR NON MARKING SOLE

STEEL MIDSOLE

MATCHING 2 COLOUR SPORTS TECH LACES

EL180 SIZ



Black tough leather Combat Zip boot

Sizes: 3-8 • Weight: 680 gr

EN ISO 20345 S1P



GENEROUS FIT

STEEL MIDSOLE

(EL170 SI)

TWO COLOUR NON MARKING SOLE

MATCHING 2 COLOUR SPORTS TECH LACES

EL170 / EL170 SI



Black grain leather industrial ankle boot

Sizes: 3-8 • Weight: 620 gr

EN ISO 20345 S1



STEEL MIDSOLE

HD91



Sand nubuck full grain leather ankle boot

Sizes: 3-8 • Weight: 620 gr

EN ISO 20345 S3



ATHLETIC FIT

SUITABLE FOR LADDER WORK

PADDED COLLAR AND BELLows TONGUE

HDST3W



Wide fit leather training shoe with black French border

Sizes: 3-8 • Weight: 700 gr

EN ISO 20345 S1P

Check sizes and availability before ordering for SI version



WOMEN'S RUGGED RAIDERS

WOMEN'S GTE

Goliath Tactical Equipment

The Women's GTE range features:

- Full grain leather
- Gore-tex waterproof lining or moisture wicking textile lining
- Dual Density PU or Rubber
- Steel toe cap resistant to 200 joules
- Protective steel midsole
- Full length dual density PU footbed
- Oil resistant outsole
- Slip resistant outsole
- Heat resistant.



PREMIUM GORE-TEX
LINING

STEEL TOE AND MIDSOLE



GTX424



Tactical ankle boot

Sizes: 3-13 • Weight: 780 gr

EN ISO 20345 S3



STEEL TOE AND MIDSOLE



MG02



Premium leather uniform safety boot

Sizes: 3-13 • Weight: 840 gr

EN ISO 20345 S3



RAPID LACE/ZIP COMBO

PREMIUM GORE-TEX
LINING

STEEL TOE AND MIDSOLE

EXTERNAL BUMP CAP

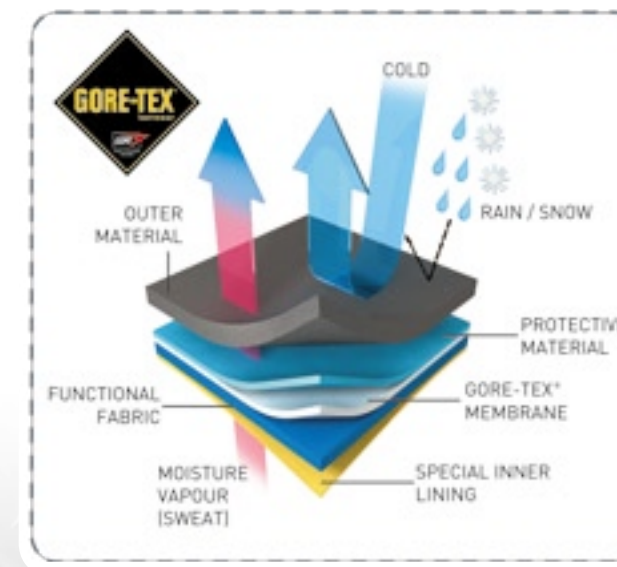
GTX421



Tactical ankle boot

Sizes: 3-13 • Weight: 780 gr

EN ISO 20345 S3



PREMIUM GORE-TEX
LINING

STEEL TOE AND MIDSOLE



GTX602



Waterproof Gore-tex® tactical shoe

Sizes: 3-13 • Weight: 780 gr

EN ISO 20345 S3

WOMEN'S RIGGERS

Designed for the toughest working conditions

Our most popular HD riggers feature:

- Steel toe cap to 200 joules
- Upper material: Full grain leather
- Steel midsole
- Dual density hydrolysis+ PU.
- PU bump cap for long life in the most challenging conditions
- Side tabs for easy donning
- Full length dual density PU footbed
- Oil resistant sole
- Slip resistant sole
- Heat resistant to 160°C.



WARM LINED

STEEL MIDSOLE

HD424 SI



Tan rigger

Sizes: 3-13 • Weight: 840 gr

EN ISO 20345 S1P



STEEL MIDSOLE

UNLINED FOR WARM
WORKING CONDITIONS

HD425 SI



Tan rigger

Sizes: 3-13 • Weight: 840 gr

EN ISO 20345 S1P

SAFETY FOOTWEAR IN LARGER SIZES



DUAL DENSITY RUBBER SOLE

STEEL MIDSOLE

RIDGED BUMP CAP

SDR10CSI EXTR



Black safety ankle boot with ridged scuff cap, steel midsole with DDR sole

Sizes: 14,15 and 16 • Weight: 1100 gr



DDR SPORT SOLE

STEEL MIDSOLE

SDR16SI EXTR



Groundmaster Safety Shoe

Sizes: 14,15 and 16 • Weight: 900 gr



HM2004 EXTR



Black foundry boot with rubber sole

Sizes: 14,15 and 16 • Weight: 1200 gr

ACCESSORIES



GOLIATH CLEANING SPONGE

Colour: Neutral
Available in retail packs of 24.



GOLIATH NO BUFF SHOE SHINE

Liquid polish
Colour: black
Available in retail packs of 12.



GOLIATH DUAL DENSITY PU FOOTBED

Instant comfort
Excellent shock absorption
Available in individual pairs

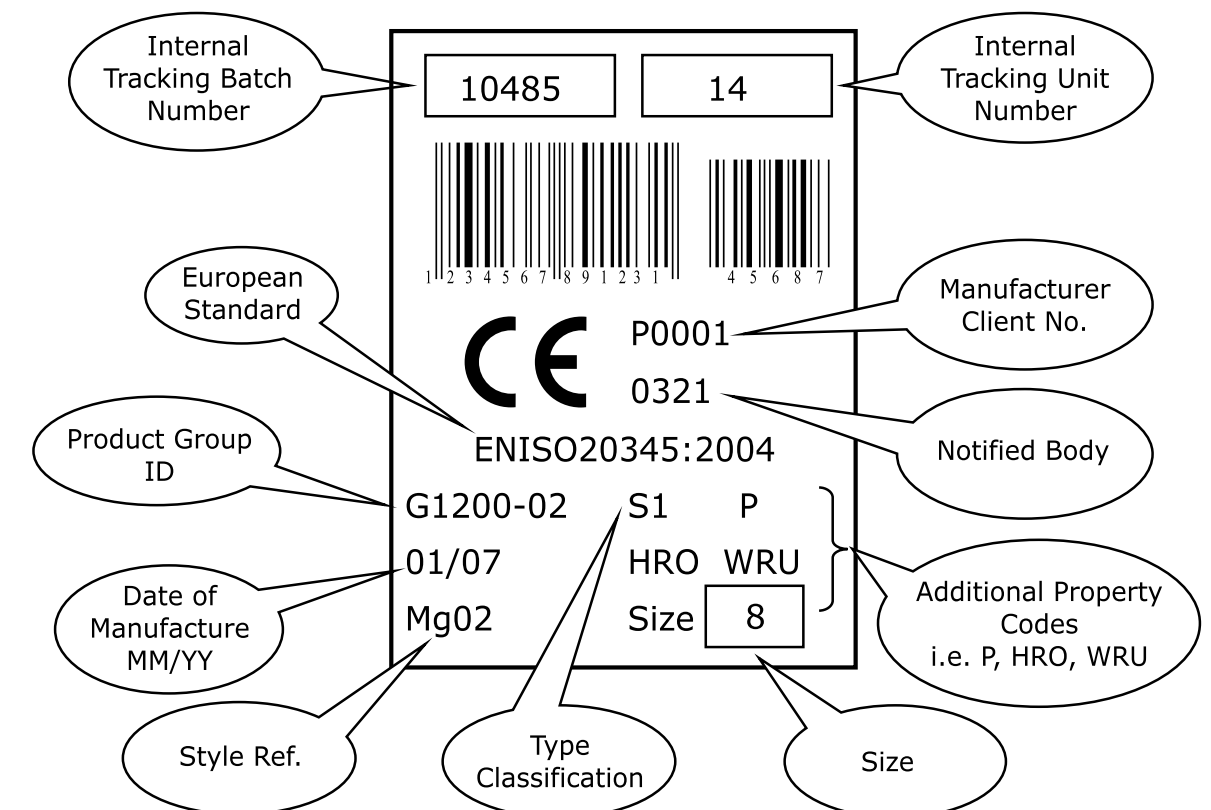


BLACK FLAT BOOT/SHOE LACE

High friction tech lace
Available in 140cm, 90cm and 70cm
Available in quantities of 10.

PRODUCT MARKING

Example of label sewn into footwear



GOLIATH FOOTWEAR SIZE CONVERSION

UK	2	3	4	5	6	6,5	7	8	9	10	10,5	11	12	13	14
USA	4	4,5	5	6	7	7,5	8	9	10	11	11,5	12	13	14	15
EUROPE	35	36	37	38	39	40	41	42	43	44	45	46	47	48	49

Please note that there is no real standard for converting shoes.

Your best option is to always have your foot measured at a local distributor or select from the two closest sizes to your estimated size.



CE Mark

Goliath Safety Footwear has been tested by **SATRA** Technology centre to the Directive for Personal Protective Equipment (PPE) Directive No.89/686/EEC and carries the CE mark accordingly.



EN ISO 9001:2004

Goliath operates a Quality Assurance System in accordance with EN ISO 9001:2004. This provides the customer with further proof that the product is regularly monitored through a quality system and ongoing audit testing.



Guarantee of Quality

All our Safety footwear is manufactured to EN specifications as indicated and fully complies with the appropriate standard and the statutory requirements where applicable. However, we do reserve the right to amend design and material specifications, where necessary.

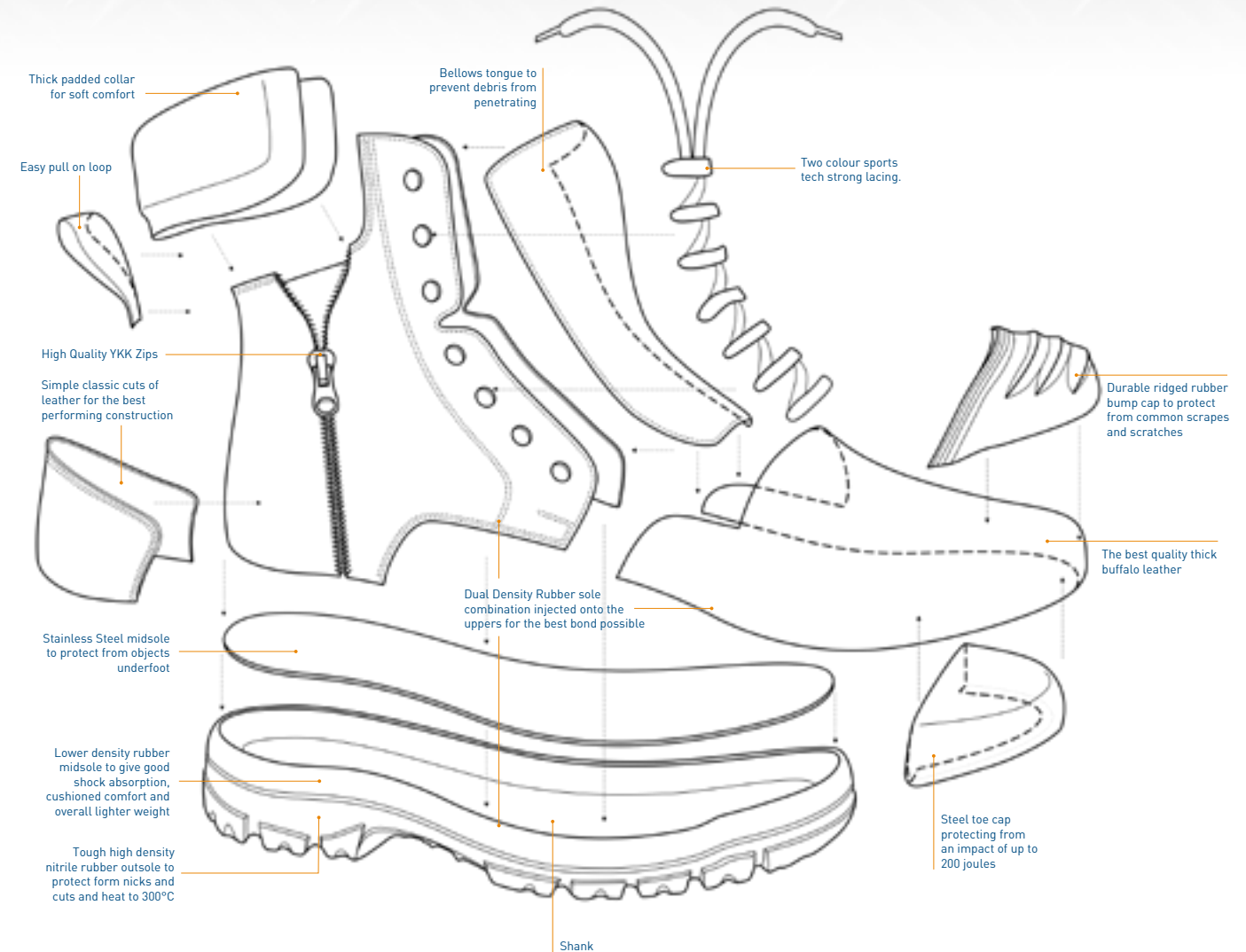


A member of BSIF

Goliath Footwear is a member of the British Safety Industry Federation which is the lead association for PPE regulations in the UK. The federation is recognised as a competent authority by the Health and Safety Executive



FOOTWEAR DESIGN



Using Goliath Footwear's SATRA accredited laboratory facilities, and SATRA's independent technology centre we continue to test our products to ensure consistent quality.

We test for the following properties:

- Construction quality
- Toe protection to 200 joules
- Toe cap length
- Impact resistance
- Compression resistance
- Energy absorption of seat region
- Upper/outsole bond strength
- Electrical resistance
- Antistatic properties

We test the footwear upper for:

- Tear strength
- Tensile strength
- Water absorption & penetration
- Water vapour permeability and coefficient
- pH value
- Lining abrasion resistance & pH
- Insole thickness
- Insole water absorption & desorption
- Insole abrasion resistance.

We test the footwear outsole for:

- Cleated area
- Thickness
- Cleat height
- Tear strength
- Abrasion resistance
- Flexing resistance
- Outsole/interlayer bond strength
- Resistance to fuel-oil
- Slip resistance
- Hydrolysis

SAFETY & PROTECTIVE FOOTWEAR

This type of footwear protects the wearer's toes against risk of injury from falling objects and crushing when worn in work environments where potential hazards occur.

Safety footwear can be recognised by the safety standards

ENISO20345:2004 - Safety Footwear

ENISO20346:2004 - Protective Footwear

EN ISO 15090 - Footwear for Firefighters. Details of full standard available on request.

The classification system used to identify the protection provided by the footwear is listed below:

Type Classification	Type Classification Description	Additional Property Code	Additional Property Code Description
SB	ENISO20345:2004 Safety Footwear. Toe protection 200 Joules, Compression resistance, 15000 Newtons.	HRO	Heat Resistant Outsole to 300°C
S1	ENISO20345:2004 Safety Footwear. Toe protection 200 Joules, Compression resistance, 15000 Newtons. Closed seat region (fully enclosed heel), antistatic properties and energy absorption of seat region.	P	Penetration Resistance: 1100 Newtons
S2	ENISO20345:2004 Safety Footwear. Toe protection 200 Joules, Compression resistance, 15000 Newtons. Closed seat region (fully enclosed heel), antistatic properties, energy absorption of seat region, water penetration and water absorption resistance.	C	Conductive: When measured in accordance with ENISO20344:2004, 5.10, after conditioning in a dry atmosphere (ENISO20344:2004, 5.10.3.3a)], the electrical resistance shall not be greater than 100kΩ
S3	ENISO20345:2004 Safety Footwear. Toe protection 200 Joules, Compression resistance, 15000 Newtons. Closed seat region (fully enclosed heel), antistatic properties, energy absorption of seat region, water penetration and water absorption resistance, penetration resistance and cleated outsole.	A	Antistatic: When measured in accordance with ENISO20344:2004, 5.10, after conditioning in a dry and wet atmosphere (ENISO20344:2004, 5.10.3.3a) and b)], the electrical resistance shall be above 100kΩ and less than or equal to 1000MΩ
PB	ENISO20346:2004 Protective Footwear. Toe protection 100 Joules, Compression resistance, 10000 Newtons.	CI	Cold Insulation of the Sole Complex: 30 minutes at -17°C, change in temperature up to 10°C
P1	ENISO20346:2004 Protective Footwear. Toe protection 100 Joules, Compression resistance, 10000 Newtons. Closed seat region (fully enclosed heel), antistatic properties and energy absorption of seat region.	HI	Heat Insulation of the Sole Complex: 30 minutes at 150°C, change in temperature up to 22°C
P2	ENISO20346:2004 Protective Footwear. Toe protection 100 Joules, Compression resistance, 10000 Newtons. Closed seat region (fully enclosed heel), antistatic properties, energy absorption of seat region, water penetration and water absorption resistance.	E	Energy absorbtion of seat region: Not less than 20 Joules
P3	ENISO20346:2004 Protective Footwear. Toe protection 100 Joules, Compression resistance, 10000 Newtons. Closed seat region (fully enclosed heel), Antistatic properties, energy absorption of seat region, water penetration and water absorption resistance, and penetration resistance.	WRU	Water Resistant Upper

ADDITIONAL PROTECTION

Slip Resistance

Marking symbols and specifications			
Marking	Footwear slip resistant on:	Minimum Coefficient of Friction by EN ISO 13287:2007	
		Forward heel slip	Forward flat slip
SRA	ceramic tile with SLS ¹	0.28	0.32
SRB	steel with glycerol	0.13 [*]	0.18 [*]
SRC	ceramic tile with SLS ¹ and steel with glycerol	0.28	0.32
		0.13 [*]	0.18 [*]
[*] lower requirements are permitted to the end of 2008: heel 0.12 and flat 0.16			
¹ water with 0.5% sodium lauryl sulphate			

INTERNATIONAL STANDARDS EXPLAINED

The following table shows the European standards versus other standards in the USA and Canada.

	EUROPE	USA	CANADA
STANDARD	ISO EN 20345/6/7: 2004	ASTM F2412-05 & ASTM F2413 - 05	CSA Z195:02
TOE CAP IMPACT RESISTANCE	200 joules	101 joules	125 joules
TOE CAP COMPRESSION	15,000 Newton of compression force	11,121 Newton of Compression Force	NO test
PENETRATION RESISTANCE	Minimum force 1100N	Minimum force is 1200N	Minimum force is 1200N
	CE	ANSI	CSA

OCCUPATIONAL FOOTWEAR

This type of footwear incorporates no toe protection against mechanical hazards.

Safety footwear can be recognised by the safety standard:

ENISO20347:2004 – Occupational Footwear

The classification system used to identify the protection provided by the footwear is listed below:

Type Classification	Type Classification Description	Additional Property Code	Additional Property Code Description
OB	ENISO20347:2004 Occupational Footwear. No toe protection against mechanical hazards. Must provide protection to one or more of the categories P, C, A, E, CI or HI.	FO	Fuel Oil Resistant Outsole
O1	ENISO20347:2004 Occupational Footwear. No toe protection against mechanical hazards provided. Closed seat region (fully enclosed heel), antistatic properties and energy absorption of seat region.	HRO	Heat Resistant Outsole to 300°C
O2	ENISO20347:2004 Occupational Footwear. No toe protection against mechanical hazards provided. Closed seat region (fully enclosed heel), antistatic properties, energy absorption of seat region, water penetration and water absorption resistance.	P	Penetration Resistance: 1100 Newtons
O3	ENISO20347:2004 Occupational Footwear. No toe protection against mechanical hazards provided. Closed seat region (fully enclosed heel), antistatic properties, energy absorption of seat region, water penetration and water absorption resistance and penetration resistance.	C	Conductive: When measured in accordance with ENISO20344:2004, 5.10, after conditioning in a dry atmosphere (ENISO20344:2004, 5.10.3.3a)], the electrical resistance shall not be greater than 100kΩ
		A	Antistatic: When measured in accordance with ENISO20344:2004, 5.10, after conditioning in a dry and wet atmosphere (ENISO20344:2004, 5.10.3.3a) and b)], the electrical resistance shall be above 100kΩ and less than or equal to 1000MΩ
		CI	Cold Insulation of the Sole Complex: 30 minutes at -17°C, change in temperature up to 10°C
		HI	Heat Insulation of the Sole Complex: 30 minutes at 150°C, change in temperature up to 22°C
		E	Energy absorbtion of seat region: Not less than 20 Joules
		WRU	Water Resistant Upper

ADDITIONAL PROTECTION

Slip Resistance

Marking symbols and specifications			
Marking	Footwear slip resistant on:	Minimum Coefficient of Friction by EN ISO 13287:2007	
		Forward heel slip	Forward flat slip
SRA	ceramic tile with SLS ¹	0.28	0.32
SRB	steel with glycerol	0.13 [*]	0.18 [*]
SRC	ceramic tile with SLS ¹ and steel with glycerol	0.28	0.32
		0.13 [*]	0.18 [*]
[*] lower requirements are permitted to the end of 2008: heel 0.12 and flat 0.16			
¹ water with 0.5% sodium lauryl sulphate			

Goliath's range of safety and occupational footwear incorporate the latest technological advanced materials and production techniques.



Lightweight, cushioning expanded rubber midsole.

Wear, slip, heat, oil and acid resistant compact rubber outsole.

DDR

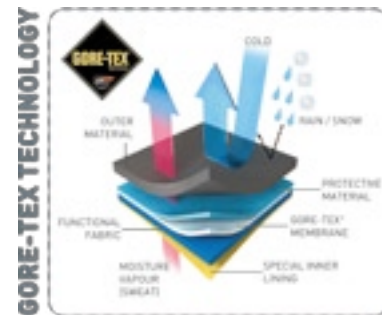
Now even lighter!

DUAL DENSITY RUBBER (DDR)

Goliath's revolutionary Dual Density Rubber soling system is now stronger and lighter than ever before. The new DDR sporty sole unit is **140grams lighter** than the previous DDR sole, injected with air for even more cushion comfort.

The new improved DDR formula offers the same revolutionary principle in that it uses a highly durable nitrile rubber outsole combined with a special air injected midsole for cushioned comfort and excellent shock absorption.

This Dual Density Rubber combination is then injected onto the sole for the strongest bond possible.



GORE-TEX®

All Goliath footwear labelled with the GORE-TEX® footwear logo are premier products made with a windproof and breathable GORE-TEX® membrane. The premium GORE-TEX® styles incorporating the GORE-TEX® lining material are manufactured under license to ensure the highest standards are met.

The process is independently audited to ensure conformance to the specification for all GORE-TEX® premium products is consistent.



CORDURA®

CORDURA®, a high-performance fabric resistant to abrasions, tears, and scuffs

- 2 x more durable than standard nylon
- 3 x more durable than polyester
- 10 x more durable than cotton canvas



L-PROTECTION®

L-Protection® for increased comfort and safety as a new generation nail-proof textile insole.

- Safer than steel.
- Resists penetration even by small-diameter nails
- Greater protected surface area of the foot
- Zero traceability by metal detector
- Maximum flexibility and comfort
- Greater ground adherence
- Minimum weight.
- Thermo and electro isolation



STEEL TOE CAP

At Goliath Footwear, we only use steel toe caps from the worlds most reputable suppliers. The steel toe cap is designed in such a way that when integrated into the shoe system it provides a survival space for the toes keeping them safe and comfortable.



POLYCARBONATE NON-METAL TOE CAP

Goliath footwear's non metallic range features a toe cap made from Polycarbonate. This material is ultra tough and extremely lightweight and often used in the production of bullet resistant windows and doors as well as being used for helmets and other PPE equipment. These toe caps have been developed and produced in our own factory to ensure ultimate quality and performance.

FOOTBEDS

We use technically engineered materials to ensure healthy walking day after day.



DUAL DENSITY PU FOOTBED

This specially engineered footbed is made from two densities of polyurethane so that it is as comfortable as possible whilst absorbing all the shocks in everyday work. Our DDPU footbed has a moisture wicking top cloth and a special stitching line to aid conductivity and enhance the antistatic performance of the footwear.



MICROFIBRE ATOMIUM

Goliath's Clean Room / Food Processing ATOMIUM range features microfibre uppers. This material is designed to withstand more instances of liquids and splashes in the work environment ensuring a greater performing long lasting product.



ATOMIUM ANTI-CLOG TECHNOLOGY

The ATOMIUM sole has been specially designed for super slip resistance. The cleats are evenly, openly spaced, with gentle curves and nowhere for dirt to get lodged. As the wearer walks, the shape of the sole changes and any waste is then dislodged.

TECHNICAL GLOSSARY

Anti-static shoe: Shoe with a metal plug in the sole to ensure that static electricity is discharged safely to earth.

Apron front: Vamp made up of a flat apron of leather laid over the side forepart.

Airport friendly: A shoe that contains no metal of any sort, allowing the wearer to pass through airport metal detectors.

Bellows tongue: Tongue in a lace up shoe that is joined to the upper at the sides as well as the bottom.

Blind eyelets: Eyelets inserted and clenched on the lining, with only small punched holes visible on the tabs.

Boat Shoe: A type of shoe originally meant to be worn aboard a boat with a non-slip outsole, often with side lacing details and quite a casual styling.

Brogue shoe: Closed front tie shoe, the upper consisting of several parts, each punched and serrated (gimped) along the margins, together with a punched and wing cap.

Cast hardware: Made from one piece and riveted to the boot to provide a secure anchor for the tightest of lacing.

Cleats: Any traction enhancing spikes or nubs attached to the sole of a shoe to enhance grip and ensure sure footing.

Cordura: A high performance fabric resistant to abrasions, tears and scuffs.

Court shoe: Women's low cut shoe with a heel height of at least one inch.

D Rings: D Rings let the lace flow through easily so a boot can be secured quickly and easily in one go. Sometimes referred to as speed lacing system.

DDPU: Dual Density Polyurethane

Dual Density Midsole: A midsole that employs two different densities of soling material i.e. Polyurethane or rubber to improve the feel and performance of footwear.

Embossing: Method of decorating leather by pressing a heated dye onto the surface.

Eyelet: Metal reinforcement of edge of lace hole, commonly positioned in the quarters, latches or tongue, sometimes 'blind', but often embellished as a fashion feature.

Footbed: The insole of the shoe, where the foot rests and what you most feel when you are walking. It must be tough, stable and soft all at the same time. All of Goliath's foot beds are designed to compliment the natural gait or walking pattern.

Full grain leather: Leather that shows a natural texture or 'grain'.

GORE-TEX®: An advanced, lightweight waterproof material, ideal as a lining.

Grain: Pattern of pores and other surface characteristics. It is visible on the outer surface of the hide or skin after the hair or wool has been removed.

Hardware: Hardware enhances the lacing capabilities of the shoe or boot. Each type of hardware that is used on a Goliath Footwear product, is specially selected to give the wearer the best fit and enhance the overall appearance of the boot.

Heel: Component added to the back sole of the shoe or boot. Originally they may have been developed to assist riders in controlling stirrups. Commonly made as either stacked layers or single pieces of wood or cork covered leather.

Insole: The part of the shoe that the foot rests upon, usually cushioned.

Joules: One joule is the work done, or energy expended, by a force of one newton moving an object one metre along the direction of the force

Last: Solid form of wood, plastic or metal on which a shoe is built, and imparts its shape to the shoe. When the sole has been attached, the last is removed and the inside dimensions of the shoe then conform to the last.

Leather: Hide or skin which retains its original fibrous structure but has been treated so that it will not rot even after absorbing water.

Lining: The material inside a shoe

Midsole: The part of the shoe between the very bottom and where the foot rests, often cushioned.

Moccasin: Possibly the earliest type of shoe, a slip on style with visible stitching, often with a soft leather.

TECHNICAL GLOSSARY

Moulded Direct Attach: Sometimes called injection, most Goliath Footwear is made this way. The Direct Attach method requires massive R&D and investment, but provide for the most reliable footwear. Our direct attach footwear will provide years of loyal service. This technology is combined with various materials to offer the correct mix of durability and weightlessness for all kinds of applications.

Non-metal protective midsole: Goliath Footwear uses a multi-layer textile protective midsole from Lenzie called L-Protection®

Nomex: A heat and flame resistant fibre

Non-woven insole: Material made from random laid synthetic fibres and bonded with a small proportion of synthetic rubber or other polymeric materials.

Nubuck: A type of hide leather buffed on the grain side to give a velvety surface.

Outsole: The very bottom of the shoe that makes contact with the ground.

Oxford shoe: Men's style with a closed front; made in a way that has the quarters stitched under the vamp.

Polishable: This describes full grain leather which can be shined to a parade shine or can be waxed with a dubbin or similar to improve and enhance its water repellent properties.

Polycarbonate: An ultra tough, lightweight material used in Goliath UniqLite non-metal range

Polyurethane: A type of manmade material that can be made to have the look and feel of leather.

PU: The commonly used abbreviation for polyurethane.

Quarter panel: The sides of the shoe from the heel to the toe.

High chrome leather: Leather that has been tanned with vegetable tannin and then re-tanned with chromium salts. Used in the Goliath foundry range to withstand instances of molten metal.

Sock or insock: Cover of leather or synthetic material cemented to the insole after the shoe is made to hide tacks or stitches, gives a clean appearance

Sole: Another word for outsole, the bottom part of the shoe.

Stud Hooks: Stamped from thick gauge steel, these hooks cannot be easily bent or misshaped when

knocked or bashed. Commonly used on the upper parts of boots to aid rapid donning.

Suede: Leather that has been sanded or roughed to produce a surface with a soft texture.

Thermoplastic: Plastic material which can be repeatedly softened and remoulded whilst hot, but retains the moulded form in ambient temperatures.

Thickness We use the thickest leathers on our shoes and boots that are destined for the toughest of workplaces.

Tongue: Extension of the vamp over the instep. A bellows tongue is one cut about double the width of an ordinary tongue, the sides being folded over the centre area and stitched onto the tabs.

Tread: Widest part of the sole forepart in closest contact with the ground.

Upper: Portion of the shoe that covers the upper surface of the foot.

Vamp: Part of the upper between the toe cap and the quarters.

Velcro: Touch and close fasteners in which a strip of material composed of very small plastic hooks is pressed into an open weave or looped material.

Vulcanised construction: Construction in which rubber pellets are heated in a mould to form the bottom of the shoe.

Water resistant: This describes leather that has been tanned to resist the penetration of it by water. This enables water and other liquids to run off easily. Leather that is not water resistant can take water on and add weight.

Waterproof: This describes leather that is fully waterproof. It cannot be penetrated by water and the foot is kept dry at all times. At Goliath we use a GORE-TEX® lining for the ultimate in comfort and protection. Gore-tex has over 9 million pores per square inch that prevent water from getting in, but lets perspiration out to keep your foot dry.

Welt: Strip of leather sewn onto insole to which the sole is sewn.

FACTORY / PRODUCTION



Goliath Footwear, part of Yakupoglu A.S., has superb state of the art manufacturing facilities. Our in-house laboratory allows us to test all raw materials as well as finished and semi-finished goods. We support this in an ISO 9001: 2004 environment and as members of SATRA to audit and certify our products.



Investment in a Lectra 3D footwear solution for shoe design enables our experienced R & D staff to rapidly design and develop new products.



Goliath are licensed to sell and distribute GORE-TEX products. These are manufactured in-house using the highest quality leathers and materials. All premium GORE-TEX products are continually tested using patented product techniques to ensure waterproofness and breathability.



We operate 3 alternative lasting processes: conventional flat lasting, Strobel – type force lasting and GOODYEAR welt lasting which gives us the flexibility to meet most requirements.



Our investment in CAD/CAM material cutting and computerised stitching enables us to stay at the leading edge of technology and superiority.



We have invested extensively in 5 alternative sole moulding processes which means we have the capability to offer single density vulcanised rubber (DV), dual density injected rubber (DDR) soles and dual density polyurethane (PU) with the option of a rubber or thermoplastic polyurethane (TPU) wear layer all directly injected to the footwear.

